



Sealeys
Walker ■ Jarvis

(01474) 369368



Office 1 Jury House, 54a High Street

Gravesend, Kent, DA11 0AY

£550 Per Calendar Month



- Modern Office To Let
- Located in Gravesend's Town Centre
- Communal Kitchenette
- Utilities Included
- Office Measuring 189 Sq Ft
- Entry Phone System
- Communal WC
- "E" Business Use

DESCRIPTION

£550 PER CALENDAR MONTH (£6,600 PER ANNUM)

Rent includes heating, electric, water, business rates, communal cleaning and internet

LOCATION DESCRIPTION

These modern, newly decorated offices are located on Gravesend High Street, within the historic Heritage Quarter and directly opposite the main entrance to the Borough Market. They are just a short walk (approximately 500 metres) from Gravesend train station and are set amongst shops, cafés, and other local amenities.

PROPERTY DESCRIPTION

Office 1: 17.53 SqM (189 Sq Ft)

Located on the first floor with 24-hour access. Features include an entry phone system, communal kitchenette, and WC.

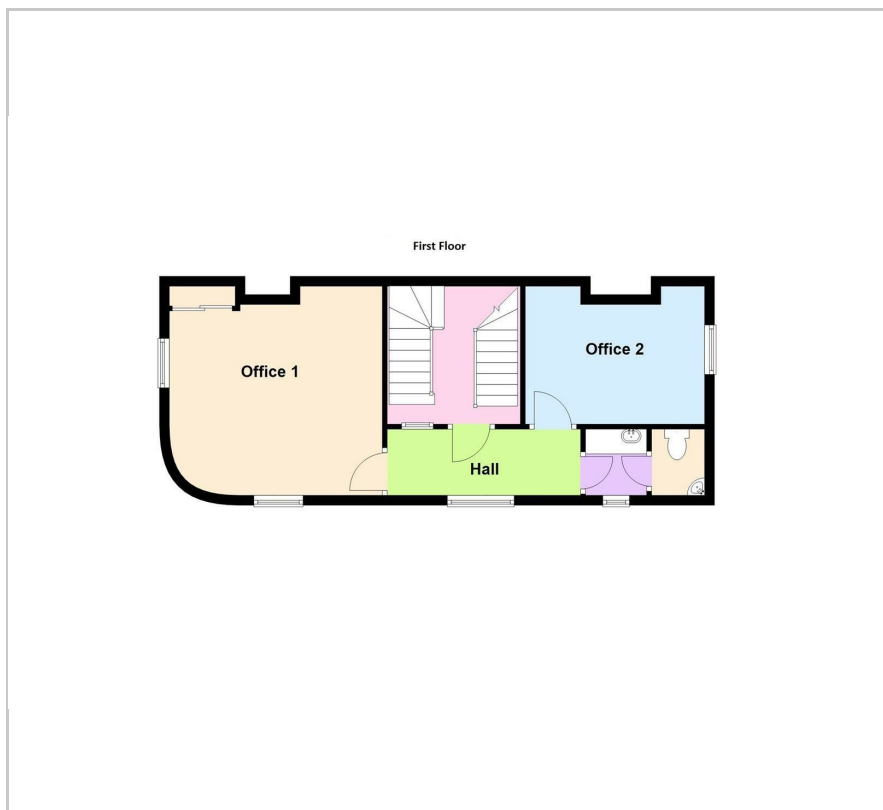
CURRENT CLASS OF BUSINESS USE

The current class of business use is 'E' Category use. Interested parties are advised to seek clarification of permitted use from the local authority.

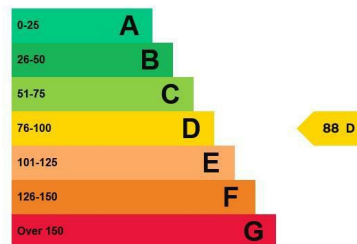
AGENTS NOTE

Ingoing tenant to pay a referencing fee of £150.

Floor Plan



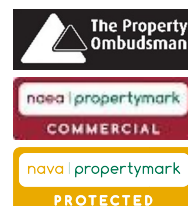
Energy Efficiency Graph



Viewing

Please call our Commercial Department on (01474) 369368 or Email: commercial@sealeys.co.uk if you would like to arrange a viewing for this property or require further information.

Sealeys Walker Jarvis
184 Parrock Street
Gravesend
Kent
DA12 1EN
www.sealeys.co.uk



Agents Note: Whilst every care has been taken to prepare these marketing particulars, they are for guidance purposes only. These details, description and measurements do not form part of a contract and whilst every effort has been made to ensure accuracy this cannot be guaranteed. Interested parties must satisfy themselves by inspection or otherwise as to the correctness of them. Floor plans are not to scale and are for illustration purposes only. Any equipment, fixtures and fittings or any item referred to have not been tested unless specifically stated.